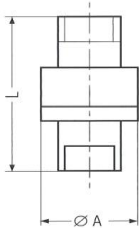


Technical specification sheet

Technical Specifications

Straight version

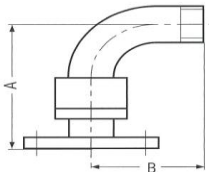


Size	Thread	Materials		Dimensions in mm		Thread in mm	
DN	G	MS	1.4571/PFE*	Ø A	L	IG	AG
6	3/8"	•	•	26	48	9	12
12	1/2"	•	•	34	52	14	14
15	1/2"	•	•	34	52	14	14
18/19	3/4"	•	•	40	52	14	14
20/25	1"	•	•	45	52	14	14
32	1 1/4"	•	•	68	89	18	18
38	1 1/2"	•	•	68	92	18	20
40	1 1/2"	•	•	68	92	18	20
50	2"	•	•	100	132	20	22
65	2 1/2"	•	•	137	156	22	24
80	3"	•	•	150	156	22	24
100	4"	•	•	175	168	22	25

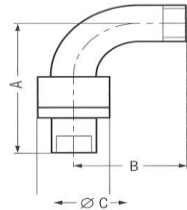
PFE* = perfluorelastomere seals

90° angle version

Materials: 1.4571 / Seals PFE*

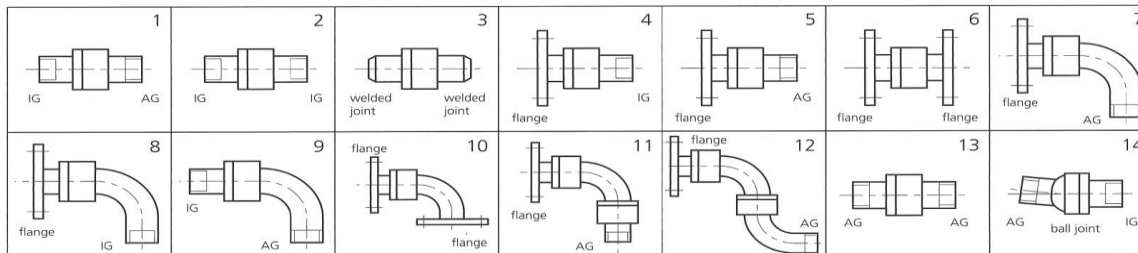


Size	Dimensions in mm	
DN	A	B
20/25	87	55
40	125	80
50	236	108
80	300	139
100	339	177



Size	Thread	Dimensions in mm		
DN	G	A	B	ØC
20/25	1"	85	55	45
40	1 1/2"	125	80	68
50	2"	191	108	100
80	3"	244	139	150
100	4"	288	177	175

Basic version



Pressure levels: from PN10 to PN40 and vacuum area. Nominal widths from DN125 up to DN300 on request.
 For sizes larger than DN25 (1") the ADG offers radial and axial ball races
 Conform with regulation 94/4 ATEX
 Conform with clean air regulation (TA-Luft)
 All specifications according to the currently stage of development. Subject to change.

ADG swivel joints for the oil & gas industry:

